

# Standortformular - Formulaire d'emplacement 1 - 130



## Kantonal st.gallische Wanderwege

Kanton  
Canton St.Gallen

LK-Nr.  
CN-No. 1

Standort-Nr.  
Emplacement No. 130

Bezirk  
District St. Gallen

Koordinaten  
Coordinates 747'837 / 256'347

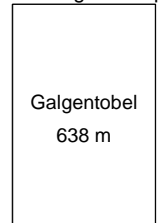
H.ü.M.  
A.s.M. 638 m

Gemeinde  
Commune St. Gallen

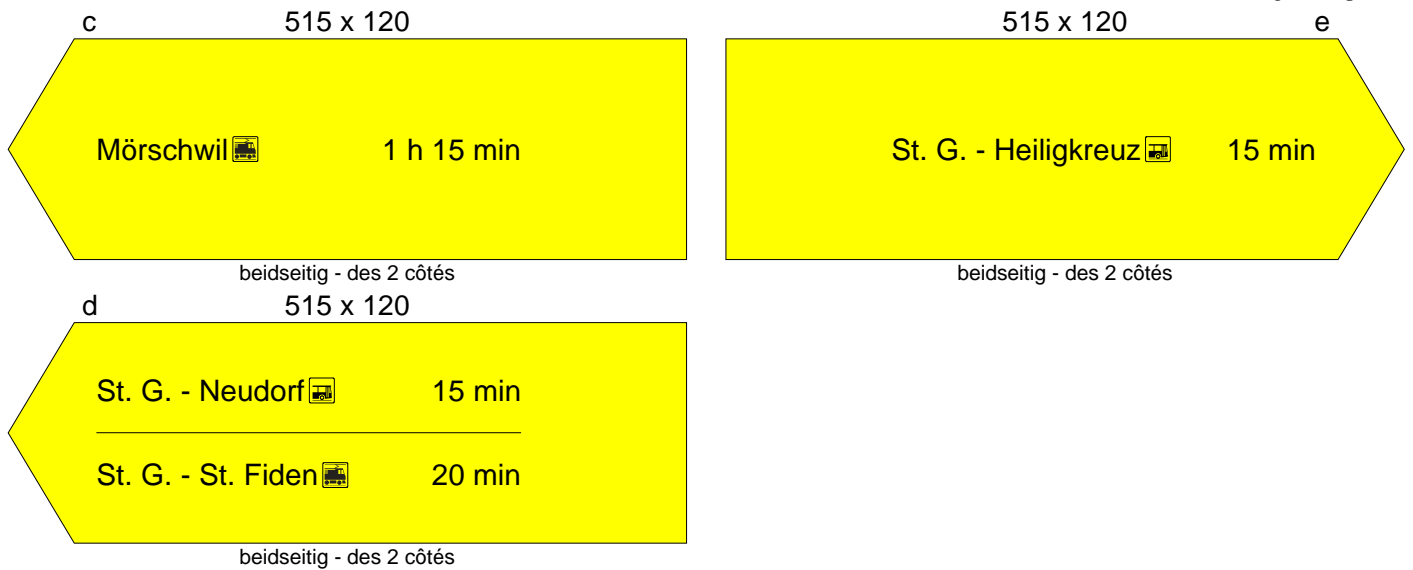
Standort  
Emplacement Galgentobel

GID-Nr.  
GID No. 3302

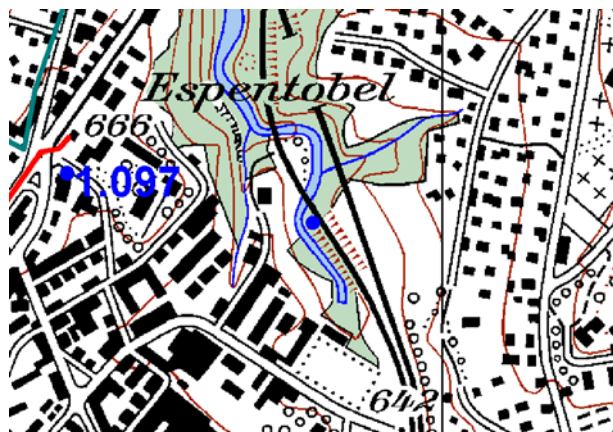
Beschreibung/Description



Standort/Emplacement



Planskizze:  
Esquisse  
du plan:



Schema:  
Schéma:

Bemerkung:  
Note:

Befestigung:  
Fixation: Eisenrohr 2"

Druckdatum/Date d'impression: 26.2.2014

Seite/Page 1